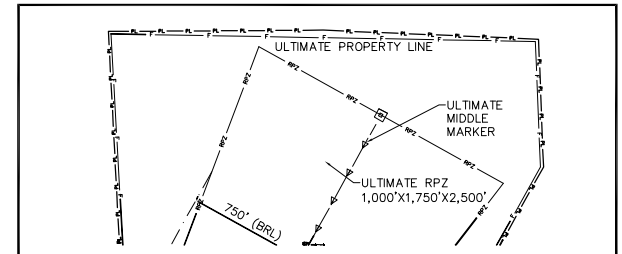
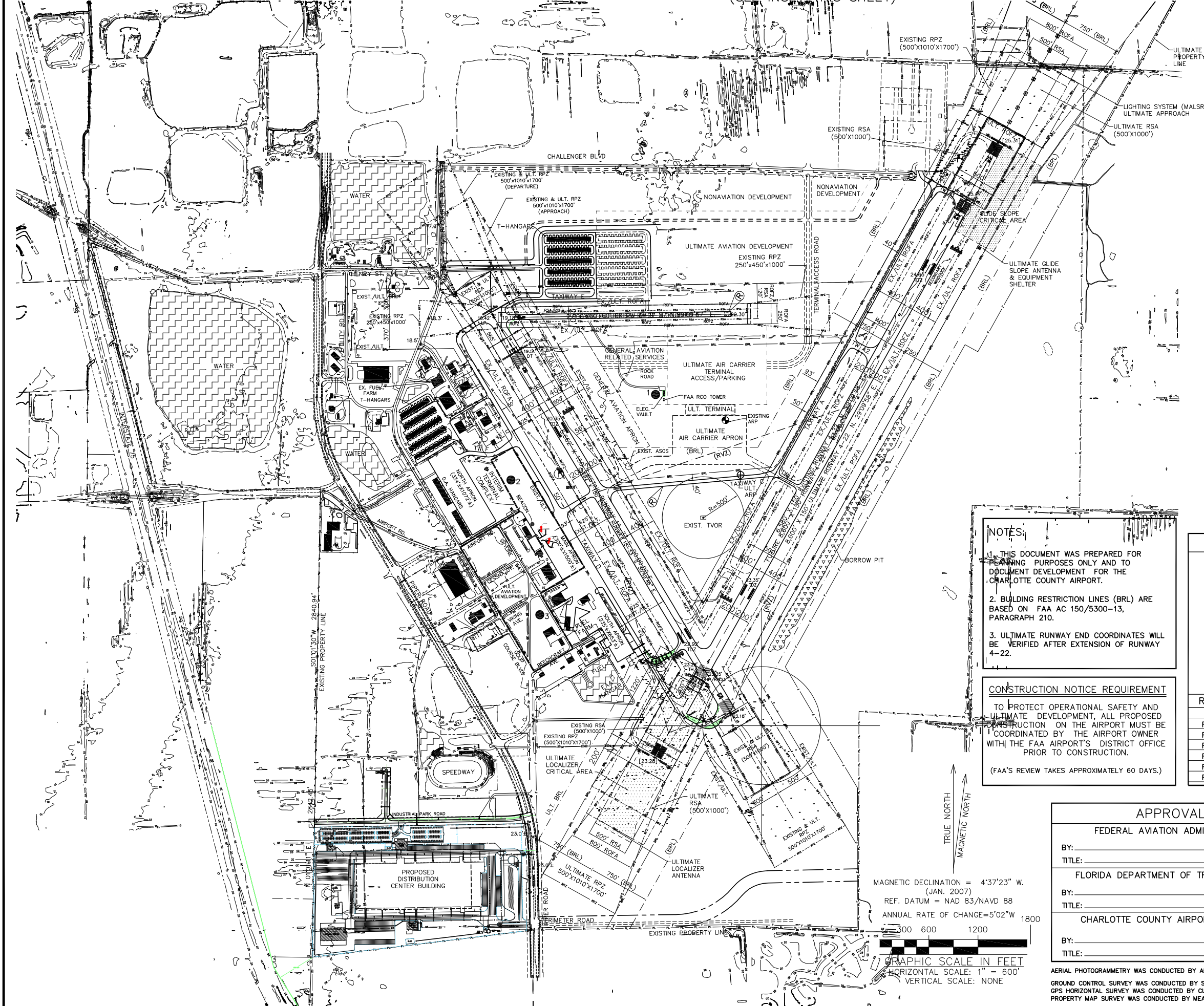


P:_Misc Projects\Charlotte County Airport\2001-11-29\2008 ALP\ 2004.2406_ALP.dwg Dec 01, 2011 - 1:56pm dganesh

(SEE INSET THIS SHEET)



INSET
SCALE: 1"=600'

EXISTING	ULTIMATE	DESCRIPTION
⊕	⊕	AIRPORT REFERENCE POINT
—	—	PROPERTY LINE
BRL	(BRL)	BUILDING RESTRICTION LINE
APRL	(APRL)	AIRCRAFT PARKING RESTRICT. LINE
20	20	CONTOUR LINES
x 20.0	[20.00]	SURFACE ELEVATION IN FEET
—	—	PAVED SURFACES
x	F	FENCE
—	—	R/W PROTECTION ZONE (RPZ)
—	—	RUNWAY SAFETY AREA
—	—	BUILDING
—	—	WATER
●	●	POTENTIAL ATCT LOCATION
—	—	THRESHOLD LIGHTS
—	—	WINDSOCK
—	—	REIL
—	—	GVGI
—	—	ASOS
⊖	⊖	TO BE REMOVED
—	—	PRECISION APPROACH CRITICAL AREAS
—	—	PAVEMENT REMOVAL

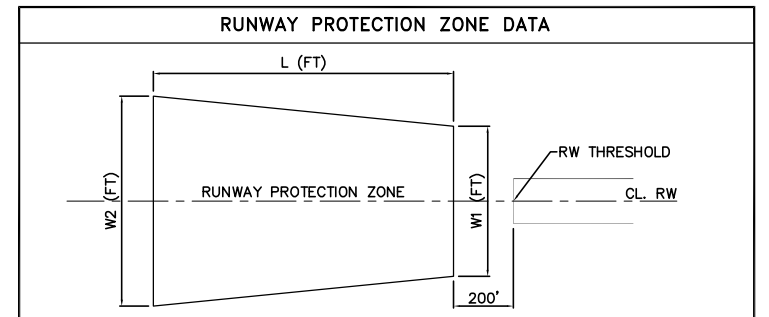
NOTES:

1. THIS DOCUMENT WAS PREPARED FOR PLANNING PURPOSES ONLY AND TO DOCUMENT DEVELOPMENT FOR THE CHARLOTTE COUNTY AIRPORT.
2. BUILDING RESTRICTION LINES (BRL) ARE BASED ON FAA AC 150/5300-13, PARAGRAPH 210.
3. ULTIMATE RUNWAY END COORDINATES WILL BE VERIFIED AFTER EXTENSION OF RUNWAY 4-22.

CONSTRUCTION NOTICE REQUIREMENT

TO PROTECT OPERATIONAL SAFETY AND ULTIMATE DEVELOPMENT, ALL PROPOSED CONSTRUCTION ON THE AIRPORT MUST BE COORDINATED BY THE AIRPORT OWNER WITH THE FAA AIRPORT'S DISTRICT OFFICE PRIOR TO CONSTRUCTION.

(FAA'S REVIEW TAKES APPROXIMATELY 60 DAYS.)



RW END	EXISTING			ULTIMATE		
	L (FT)	W1 (FT)	W2 (FT)	L (FT)	W1 (FT)	W2 (FT)
RW 4	1,700'	500'	1,010'	1,700'	500'	1,010'
RW 22	1,700'	500'	1,010'	2,500'	1,000'	1,510'
RW 15	1,700'	500'	1,010'	1,700'	500'	1,010'
RW 33	1,700'	500'	1,010'	1,700'	500'	1,010'
RW 9	1,000'	250'	450'	CLOSED	CLOSED	CLOSED
RW 27	1,000'	250'	450'	CLOSED	CLOSED	CLOSED

MAGNETIC DECLINATION = 4°37'23" W.
(JAN. 2007)
REF. DATUM = NAD 83/NAVD 88
ANNUAL RATE OF CHANGE = 5"02" W 1800

GRAPHIC SCALE IN FEET
HORIZONTAL SCALE: 1" = 600'
VERTICAL SCALE: NONE

APPROVALS

FEDERAL AVIATION ADMINISTRATION

BY: _____ DATE: _____

TITLE: _____

FLORIDA DEPARTMENT OF TRANSPORTATION

BY: _____ DATE: _____

TITLE: _____

CHARLOTTE COUNTY AIRPORT AUTHORITY

BY: _____ DATE: _____

TITLE: _____

NO.	REVISION	BY	APP.	DATE

CHARLOTTE COUNTY AIRPORT
PUNTA GORDA, FLORIDA

AIRPORT LAYOUT PLAN

DRAWN:	CHKD:	DATE:	PROJECT NO.	FILE NAME
RMD/EEL	GB	JAN. 2008	2004.2406	2004.2406_ALP

Hanson Professional Services Inc.
9015 Town Center Parkway, Suite 105
Lakewood Ranch, Florida 34202
Phone: 941.342.8321
Fax: 941.379.6474
EB-7961

SHEET
3 of 19